



Daniel Halldan

Technical Services Specialist, Fire Sprinkler Systems

Mars 2020



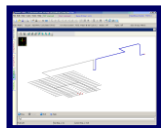
Telefon: +46 (0) 730 61 13 62

E-post:
daniel.halldan@jci.com

Teknisk Support:
FST.TechServ.Nordic.Water@jci.com

Teknisk Support & Utbildningsaktiviteter

- Teknisk support för våra produkter, system och applikationer
- Hydrauliska beräkningar
- Koder & Standards
- Fält- och QA frågor



Teknisk Support

- Utbildning i ny teknik, applikationer, koder & standards
- Certifierad utbildning
- Praktik och E-utbildningar
- TechXchange



Utbildning

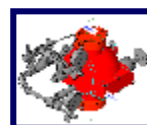
- Support & utbildning i våra SprinkCAD program

Mjukvaru Support



Marknadsföring

- Granskar tekniska dokument
- Utveckling av CAD/Revit innehåll

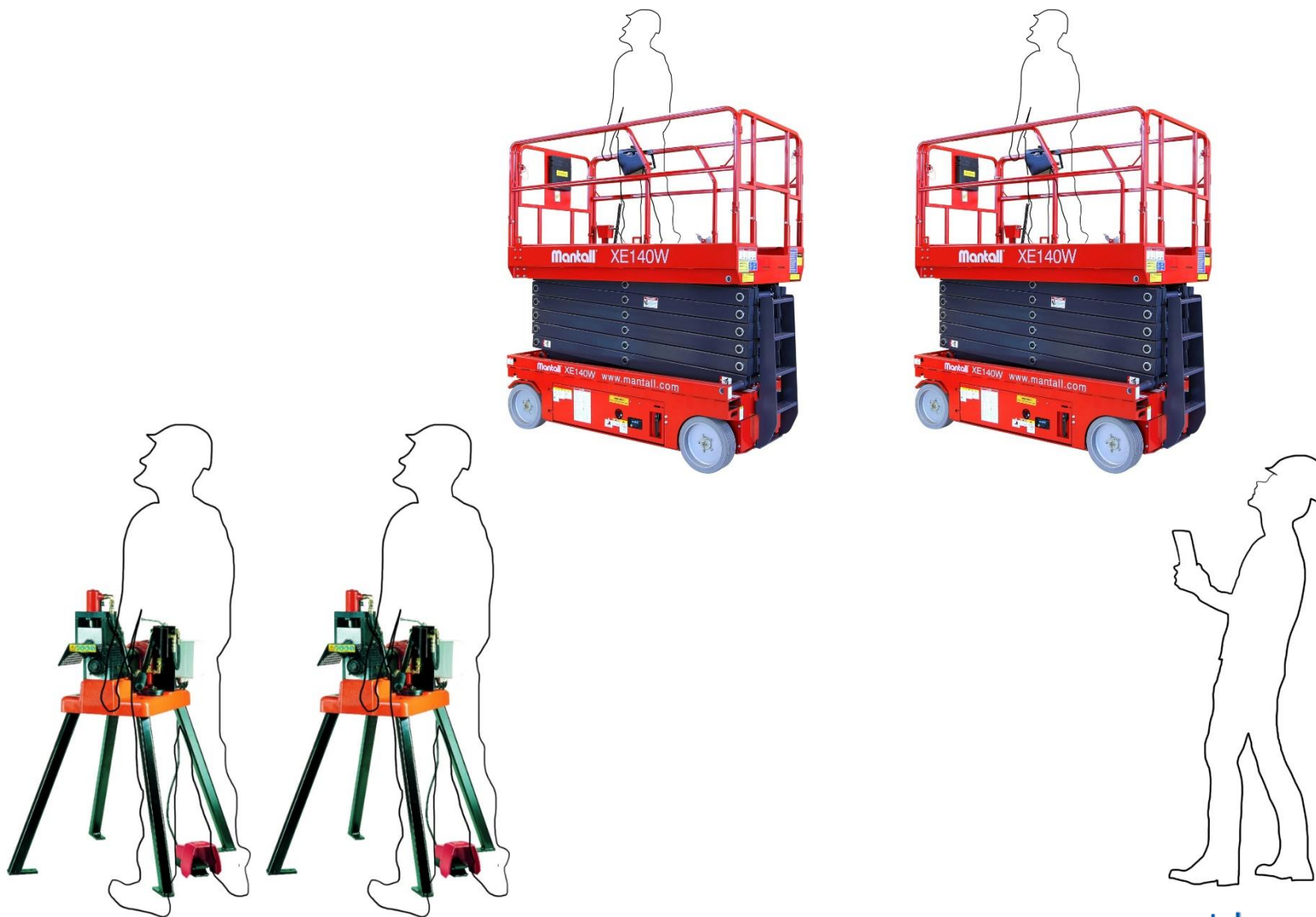




Prefab

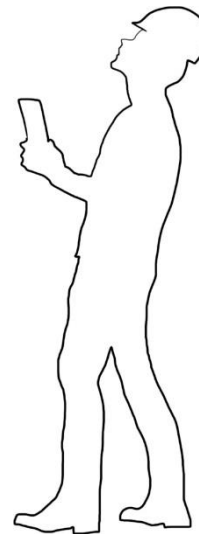
Mars 2020

Tillverka allt på plats



Prefab

BYGGARBETSPLATS 1



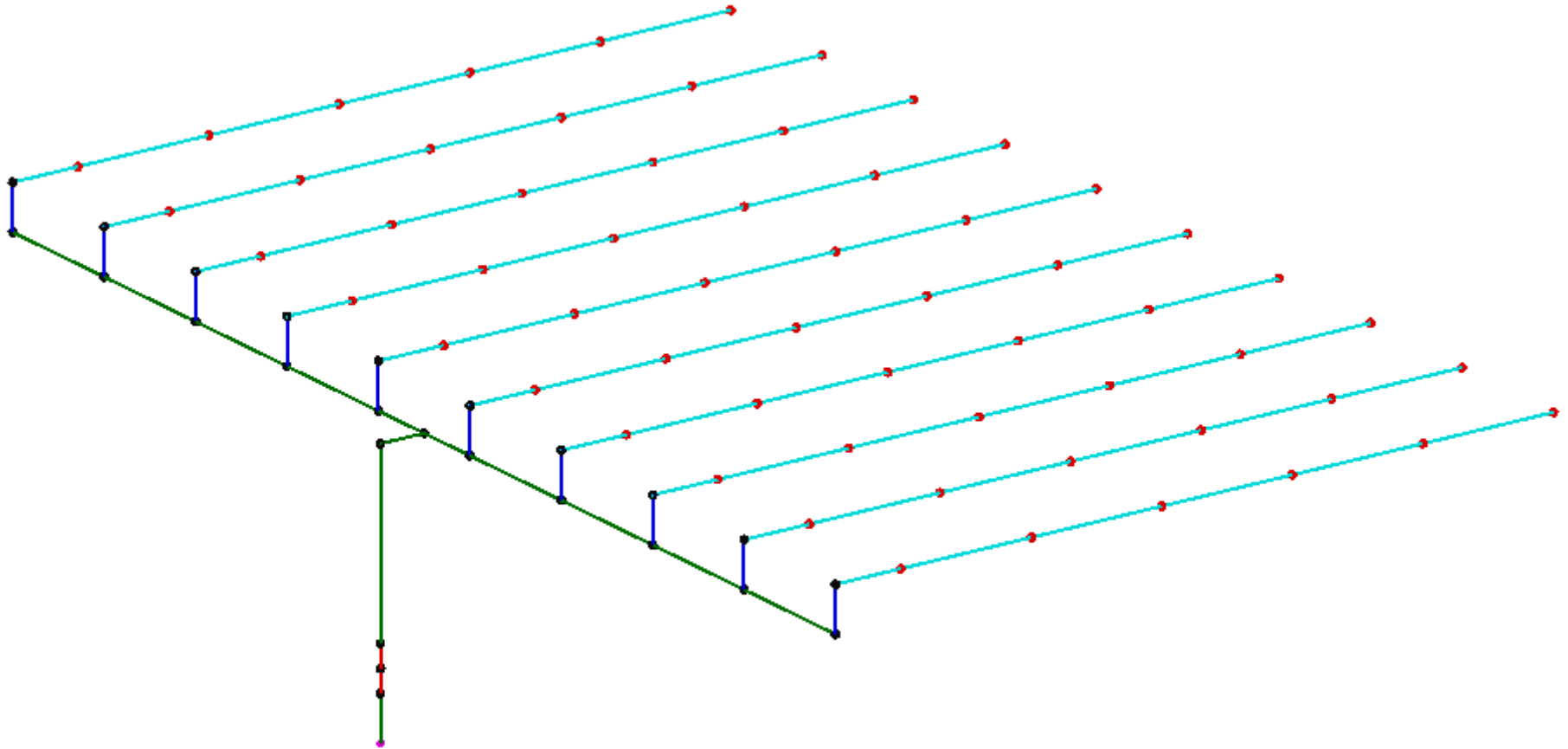
BYGGARBETSPLATS 2



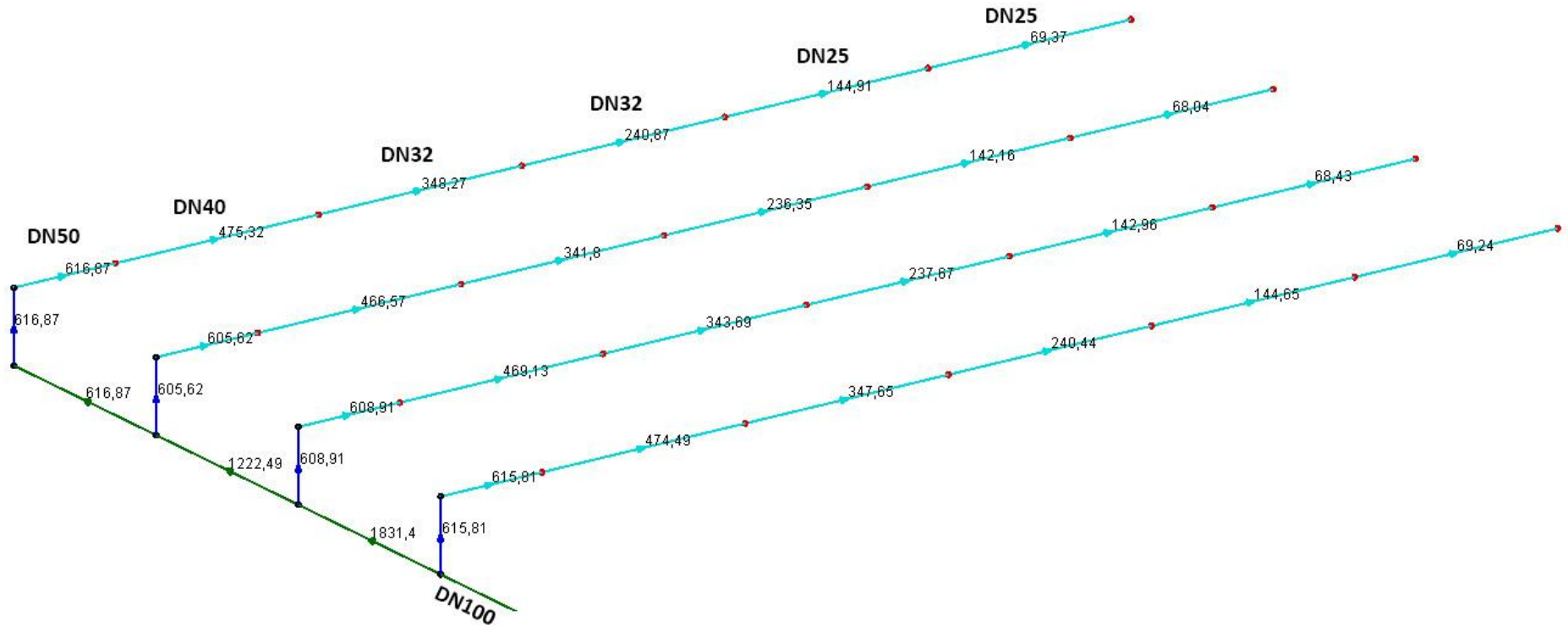
Produktion



Designuppbyggnad



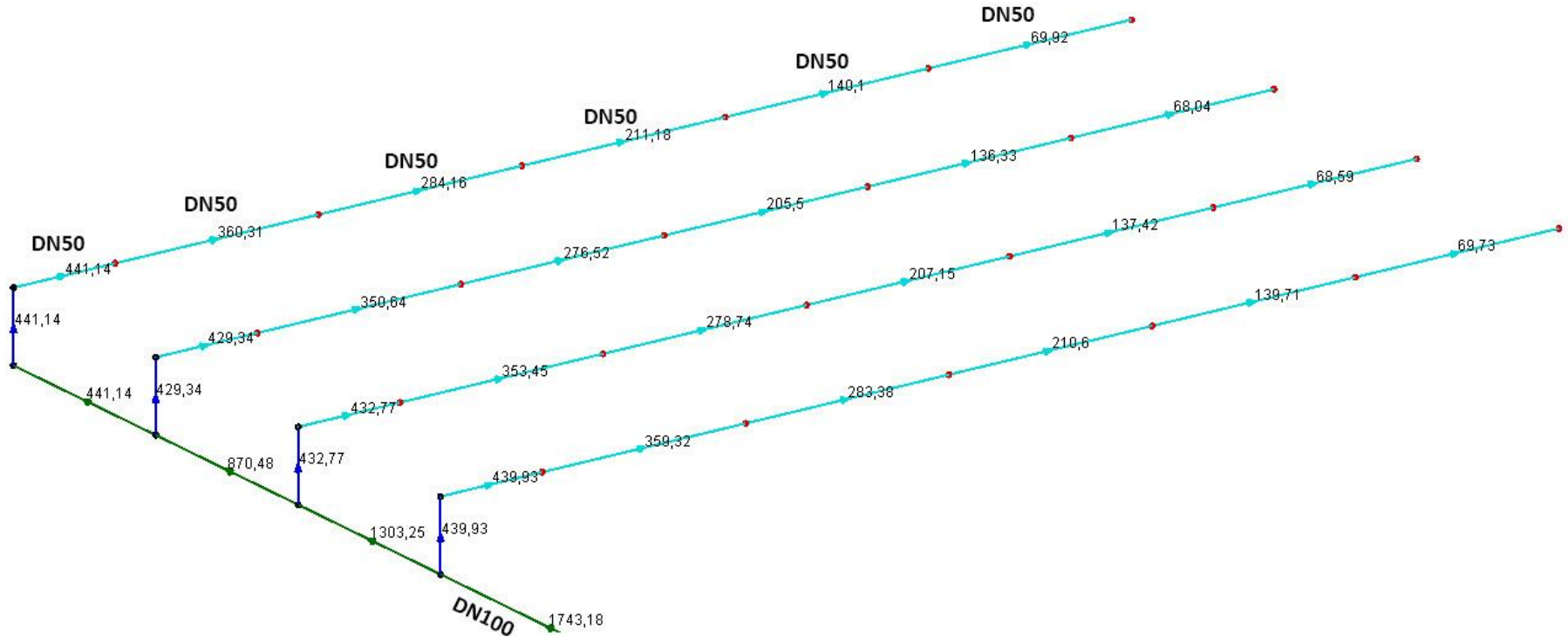
Verkningsyta



OH3 / 216m²
 2815 liter @ 4,06 bar
 K80

OH3 / 216m²
 2447,2 liter @ 3,27 bar
 K115

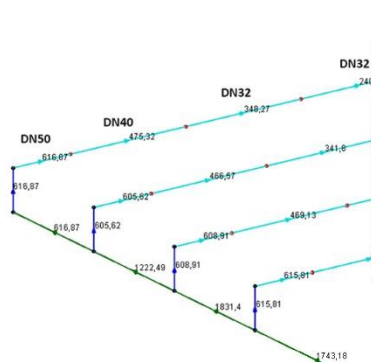
Verkningsyta



OH3 / 216m²
 2016 liter @ 2,08 bar
 K80

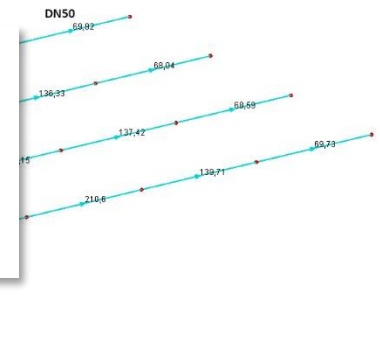
OH3 / 216m²
 1743 liter @ 1,74 bar
 K115

Verkningsyta



För DN50- systemet krävs det 19 rillkopplingar.

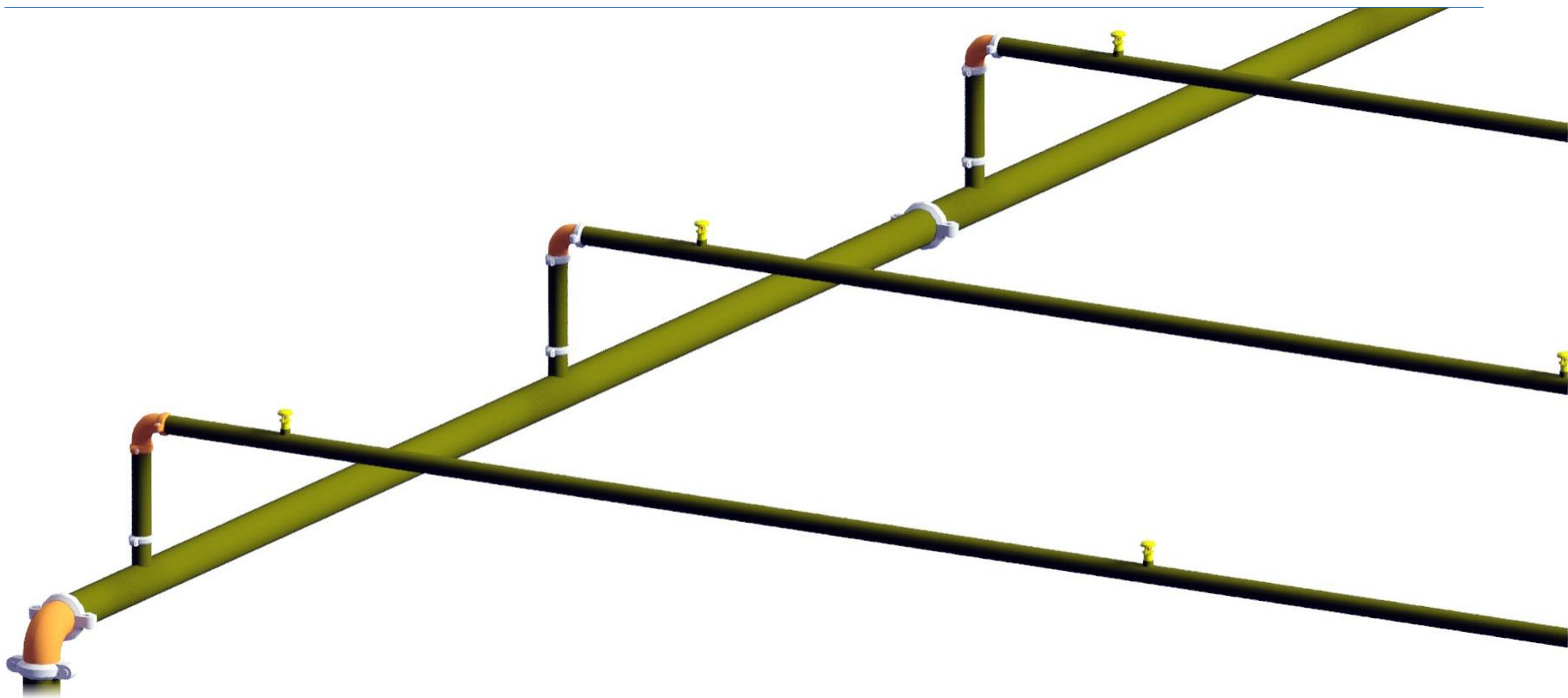
För nedtrappande systemet krävs det 46 kopplingar och blir 7% dyrare.



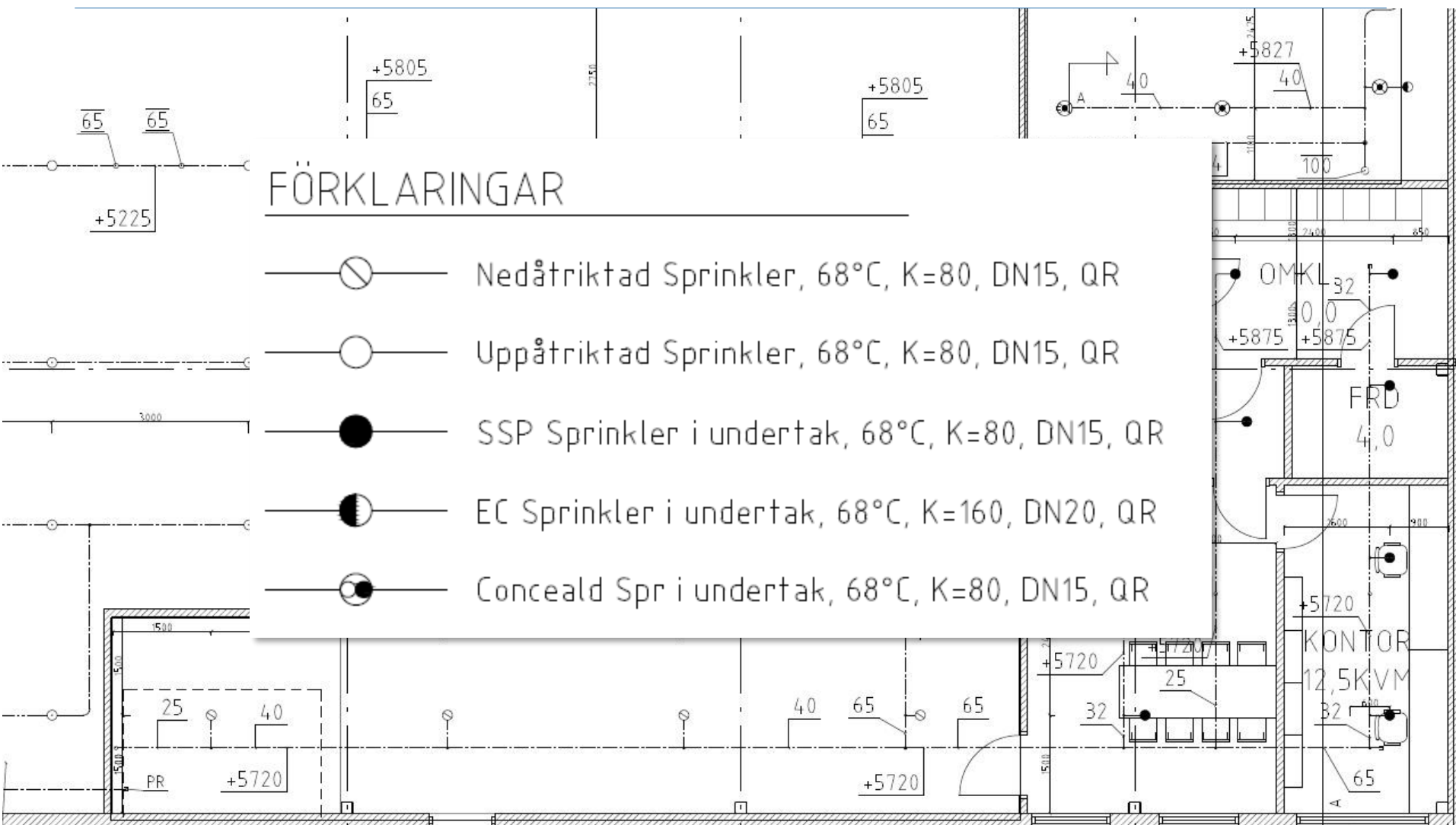
OH3 / 216m²
2447,2 liter @ 3,27 bar
K115

OH3 / 216m²
1743 liter @ 1,74 bar
K115

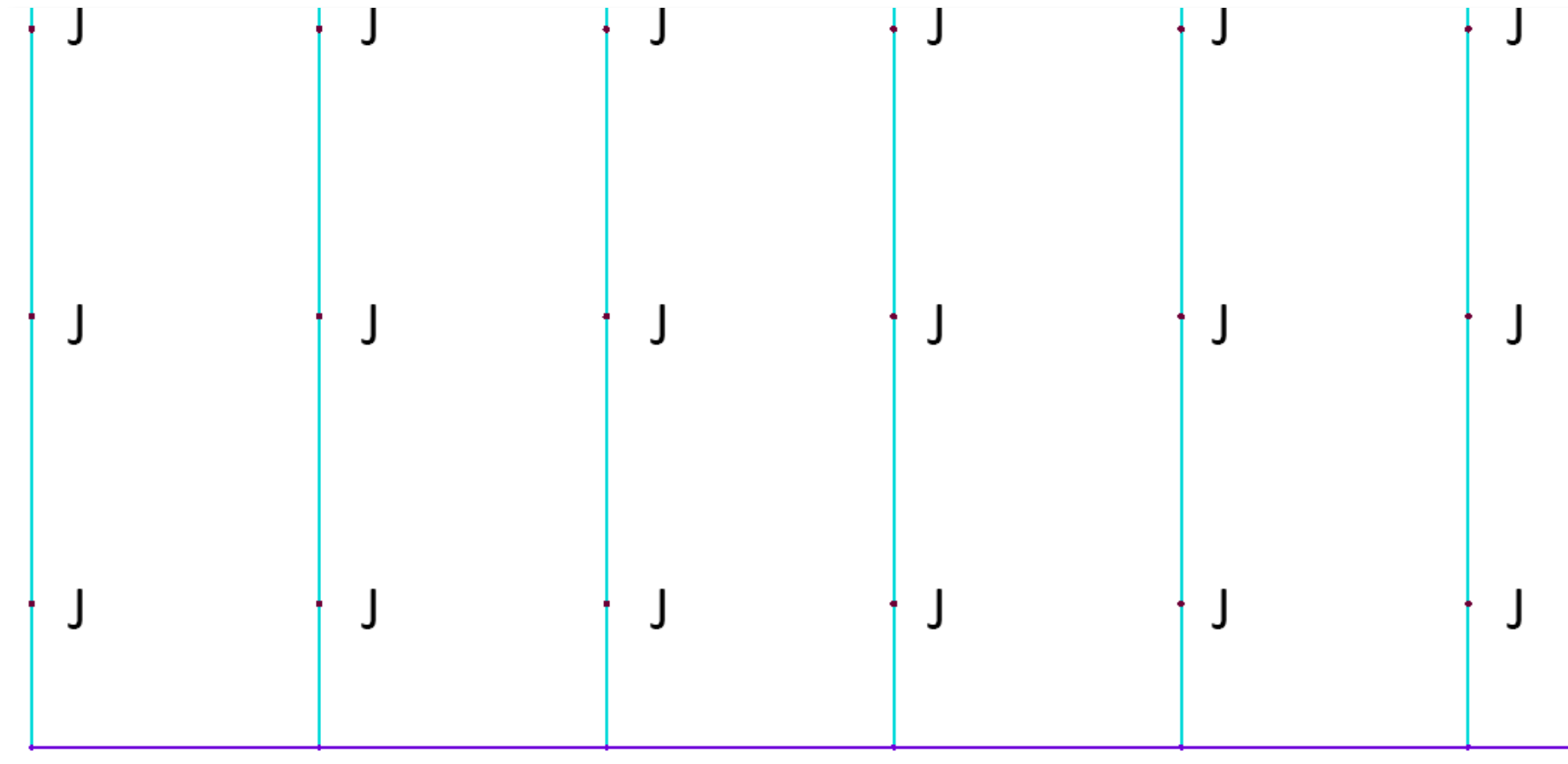
Storlek på avsättningar



Storlek på avsättningar



Storlek på avsättningar



EN-STANDARD 12845

- 4.4.3.1

CEN 12845

- m) a schedule listing the numbers of sprinklers, sprayers etc., and the area of protection;

SS-EN 12845

- m) en tabell som redovisar antalet sprinklerhuvuden, munstycken etc. samt deras täckningsytor;

NS-EN 12845

- m) oversikt som viser antall sprinklere, spredere og beskyttet område;

Byggmått - Rilldelar



Byggmått - Rilldelar

Nominal Pipe Size		Figure 501 Cast 45° Elbow		Figure 510 Cast 90° Elbow	
ANSI Inches (DN)	O.D. Inches (mm)	Nominal C to E Inches (mm)	Approx. Weight Lbs. (kg)	Nominal C to E Inches (mm)	Approx. Weight Lbs. (kg)
1 (25)	1.0 (33,7)	1.7 (43,2)	0.6 (0,3)	2,25 (57,2)	0.8 (0,4)
1-1/4 (32)	1.7 (42,4)	1.8 (44,5)	0.8 (0,4)	2.8 (69,9)	1.1 (0,5)
1-1/2 (40)	1.9 (48,3)	1.8 (44,5)	1.0 (0,5)	2.8 (69,9)	1.4 (0,6)
2 (50)	2.4 (60,3)	2.0 (50,8)	1.3 (0,6)	3.3 (82,6)	2.0 (0,9)
2-1/2 (65)	2.9 (73,0)	2.3 (57,2)	2.1 (1,0)	3.8 (95,3)	2.8 (1,3)
76,1mm (65)	3.0 (76,1)	2.3 (57,2)	2.2 (1,0)	3.8 (95,3)	3.0 (1,3)
3 (80)	3.5 (88,9)	2.5 (63,5)	3.4 (1,5)	4.3 (108,0)	4.1 (1,9)
4 (100)	4.5 (114,3)	3.0 (76,2)	5.5 (2,5)	5.0 (127,0)	7.0 (3,2)
100,1mm (125)	5.5 (139,7)	3.0 (76,2)	7.0 (3,3)	5.5 (139,7)	4.7 (4,7)
165,1mm (150)	6.5 (165,1)	3.5 (88,9)	9.2 (4,2)	6.5 (165,1)	13.9 (6,3)
6 (150)	6.6 (168,3)	3.5 (88,9)	11.2 (5,1)	6.5 (165,1)	15.2 (6,9)
8 (200)	8.6 (219,1)	4.25 (108,0)	20.6 (9,3)	7.8 (196,9)	29.6 (13,4)
267,4mm (250)	10.52 (267,4)	—	—	9.00 (228,6)	45.69 (20,72)
10 (250)	10.750 (273,0)	4.75 (120,7)	30.1 (13,7)	9.00 (228,6)	52.0 (23,6)
318,5mm (300)	12.54 (318,5)	—	—	10.00 (254,0)	61.86 (21,86)
12 (300)	12.750 (323,9)	5.25 (133,4)	48.0 (22,0)	10.00 (254,0)	66.4 (30,1)

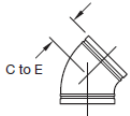


FIGURE 501
CAST 45° ELBOW

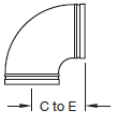


FIGURE 510
CAST 90° ELBOW

**FIGURE 2
FIGURES 501 AND 510 ELBOWS
NOMINAL DIMENSIONS**

Nominal Pipe Size		Figure 510S 90° Elbow		Figure 519S Tee	
ANSI Inches (DN)	O.D. Inches (mm)	Nominal C to E Inches (mm)	Approx. Weight Lbs. (kg)	Nominal C to E Inches (mm)	Approx. Weight Lbs. (kg)
2 (50)	2.4 (60,3)	2.8 (69,9)	1.5 (0,7)	2.8 (69,9)	2.6 (1,2)
2-1/2 (65)	2.9 (73,0)	3.0 (76,2)	2.1 (1,0)	3.0 (76,2)	4.4 (2,0)
76,1mm (65)	3.0 (76,1)	3.0 (76,2)	2.3 (1,0)	3.0 (76,2)	3.1 (1,4)
3 (80)	3.5 (88,9)	3.4 (85,9)	3.0 (1,4)	3.8 (95,9)	6.5 (3,0)
4 (100)	4.5 (114,3)	4.0 (101,6)	5.0 (2,3)	4.0 (101,6)	10.7 (4,9)
100,1mm (125)	5.5 (139,7)	4.9 (124,0)	8.7 (3,9)	4.9 (124,0)	10.9 (5,0)
5 (125)	5.6 (141,3)	4.8 (123,0)	9.4 (4,3)	4.8 (123,0)	11.6 (5,3)
165,1mm (150)	6.5 (165,1)	5.5 (139,7)	11.4 (5,2)	5.5 (139,7)	14.8 (6,7)
6 (150)	6.6 (168,3)	5.5 (139,7)	12.1 (5,5)	5.5 (139,7)	15.0 (6,8)
8 (200)	8.6 (219,1)	6.9 (174,8)	22.2 (10,1)	6.9 (174,8)	39.8 (18,1)

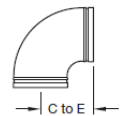


FIGURE 510S
90° ELBOW
SHORT PATTERN

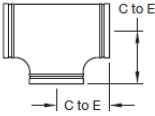
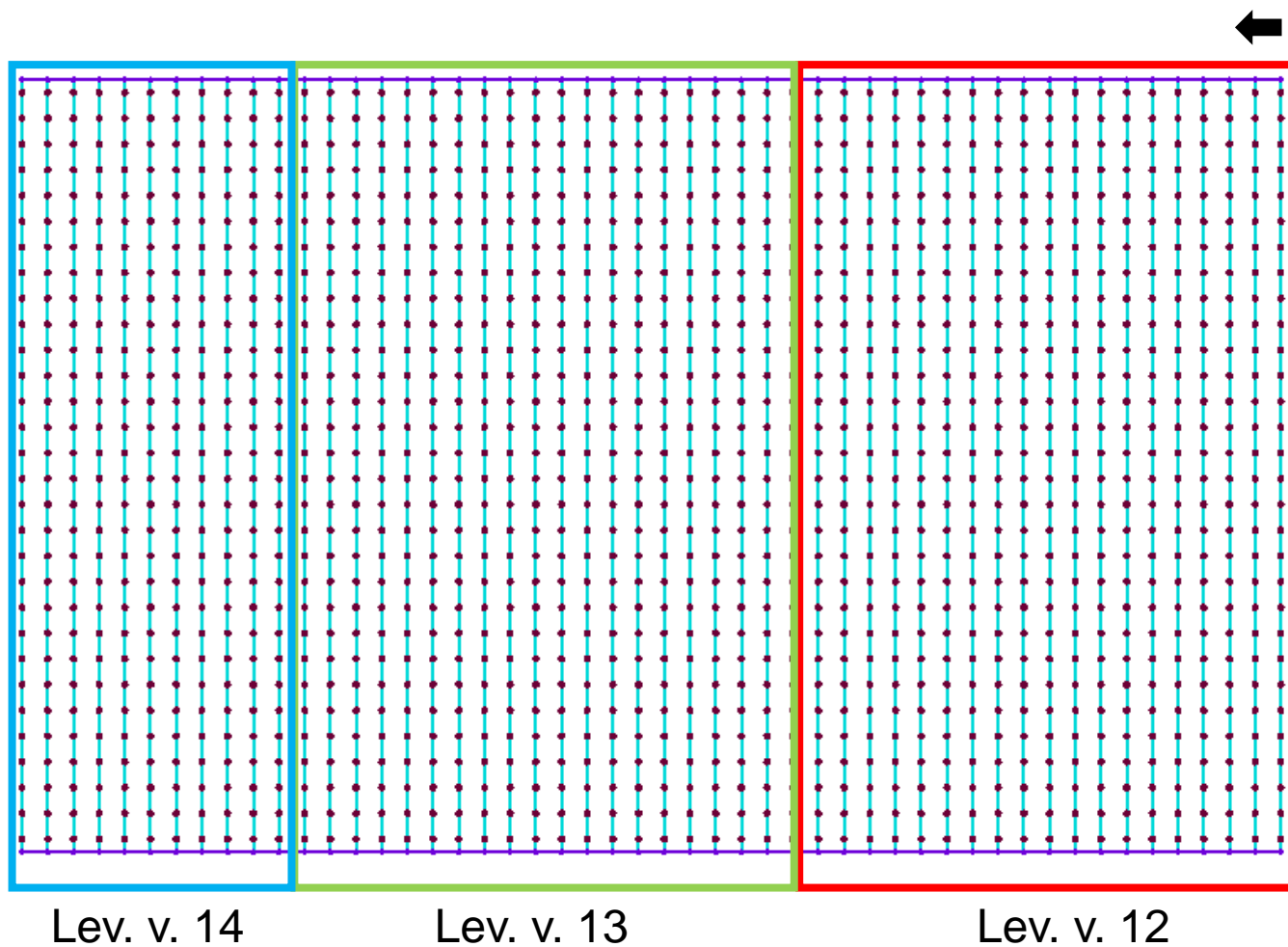


FIGURE 519S
TEE
SHORT PATTERN

**FIGURE 4
FIGURES 510S ELBOW AND FIGURE 519S TEE
NOMINAL DIMENSIONS**

Del-leverans av Prefab



Revidering av ritning

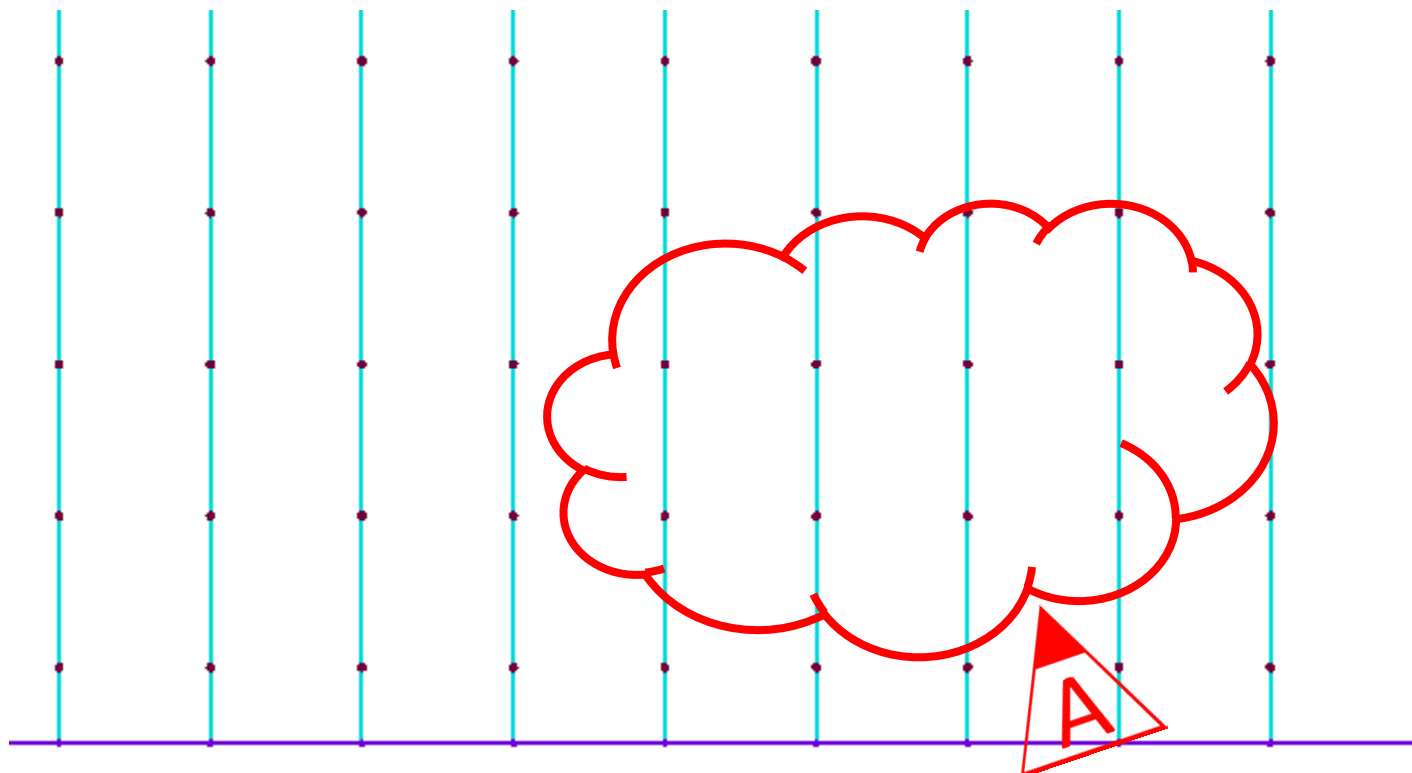
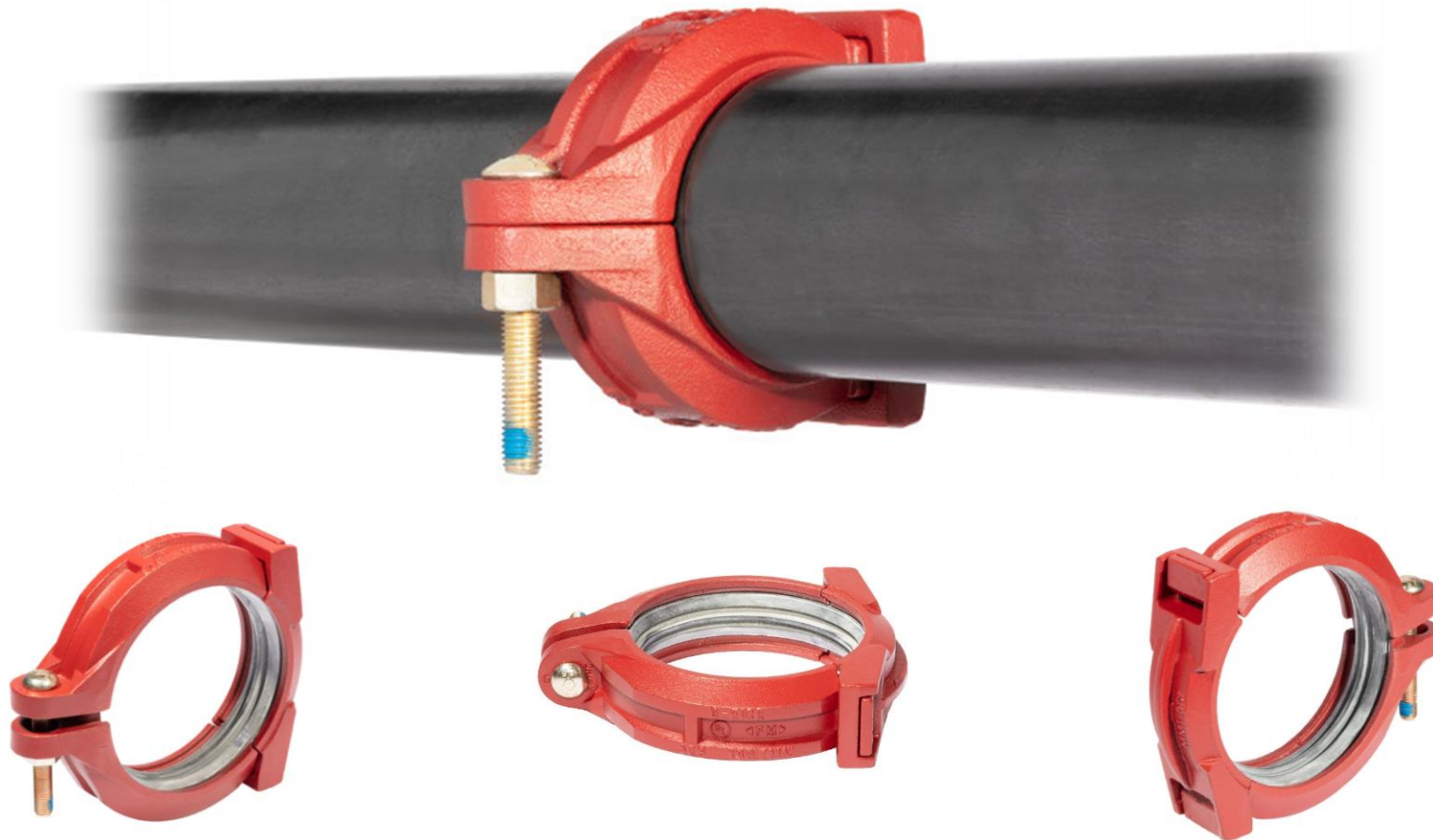


Figure 579

Den nya Grinnell G-Fire One-Bolt Koppling



Tyco:s nya ESFR K34

K-Factor	22	25	28 (FM)	34 (FM)
Thread (inch)	1	1	1	1-1/4
Max Ceilingheight (m)	13,7	13,7	16,8	16,8
Max Storageheight (m)	12,2	12,2	15,2	15,2
Minimum Aisle width (m)		1,5	2,4	1,8
Commodity	Refer to NFPA13	Refer to NFPA13	Cartooned Unexpanded	Cartooned Unexpanded
Minimum Pressure (bar)	Refer to NFPA13	Refer to NFPA13	5,5	3,8
Flow per sprinkler (l/min)	Refer to NFPA13	Refer to NFPA13	948	935
Center of Element to Ceiling (mm)	457	457	325	432

